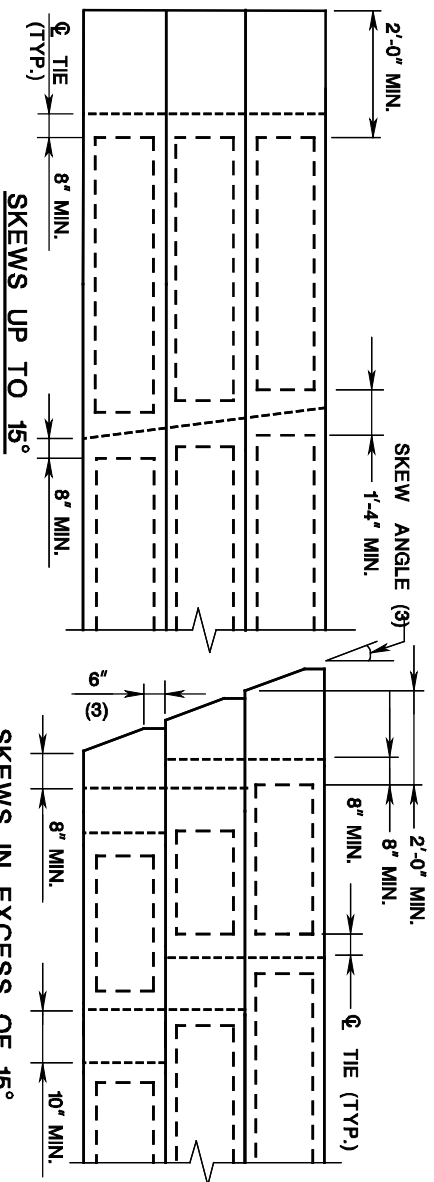


PRESTRESSED CONCRETE BOX BEAMS, TRANSVERSE TIE DETAILS

ISSUED: 2009

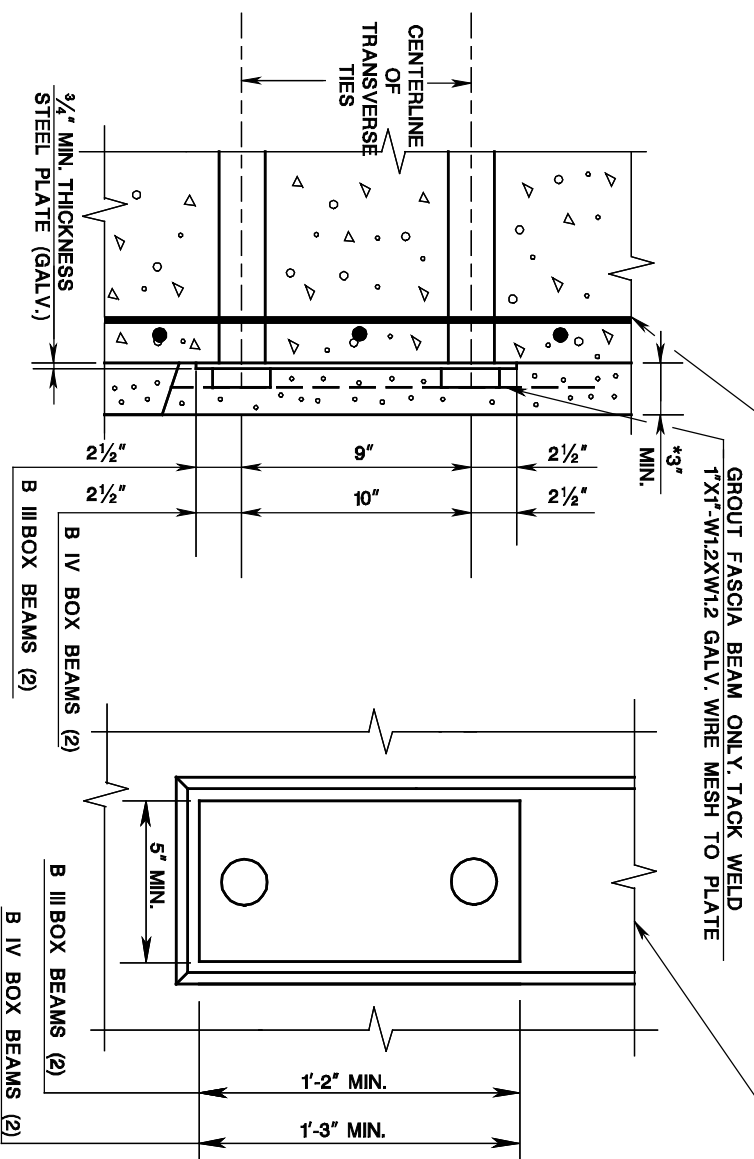
PLATE
3.10-14



PART PLAN OF DECK

REBARS FOR BEARING GRILLAGE DETAILS
TO BE SHOWN ON CONTRACT PLANS AND
DESIGNED ON A JOB TO JOB BASIS BASED
ON END ANCHORAGE STRESSES.

EXTEND POCKET TO TOP OF BEAM ON
INTERIOR BEAMS, IF NECESSARY. POCKET
SHALL NOT BE EXTENDED ON EXTERIOR OF
FASCIA BEAMS.



* STEEL PLATE AND HOLE SIZE MAY VARY FROM THE DIMENSIONS SHOWN
DEPENDING UPON THE LOADING, SKEW OR THE END ANCHORAGE DEVICE SELECTION.

NOTES:

DETAILS OF END ANCHORAGE AND POCKET

1. SEE PLATE 3.10-13 FOR ALL OTHER NOTES AND DETAILS.
2. FOR B I AND B II BOX BEAMS REFER TO PLATE 3.10-13.
3. ACUTE CORNERS OF BEAMS MAY BE SQUARED OFF AS SHOWN FOR SKEWS OVER 20°.